



Sustainable South Lanarkshire

Lesley Hinshelwood

Sustainable Development Officer
South Lanarkshire Council

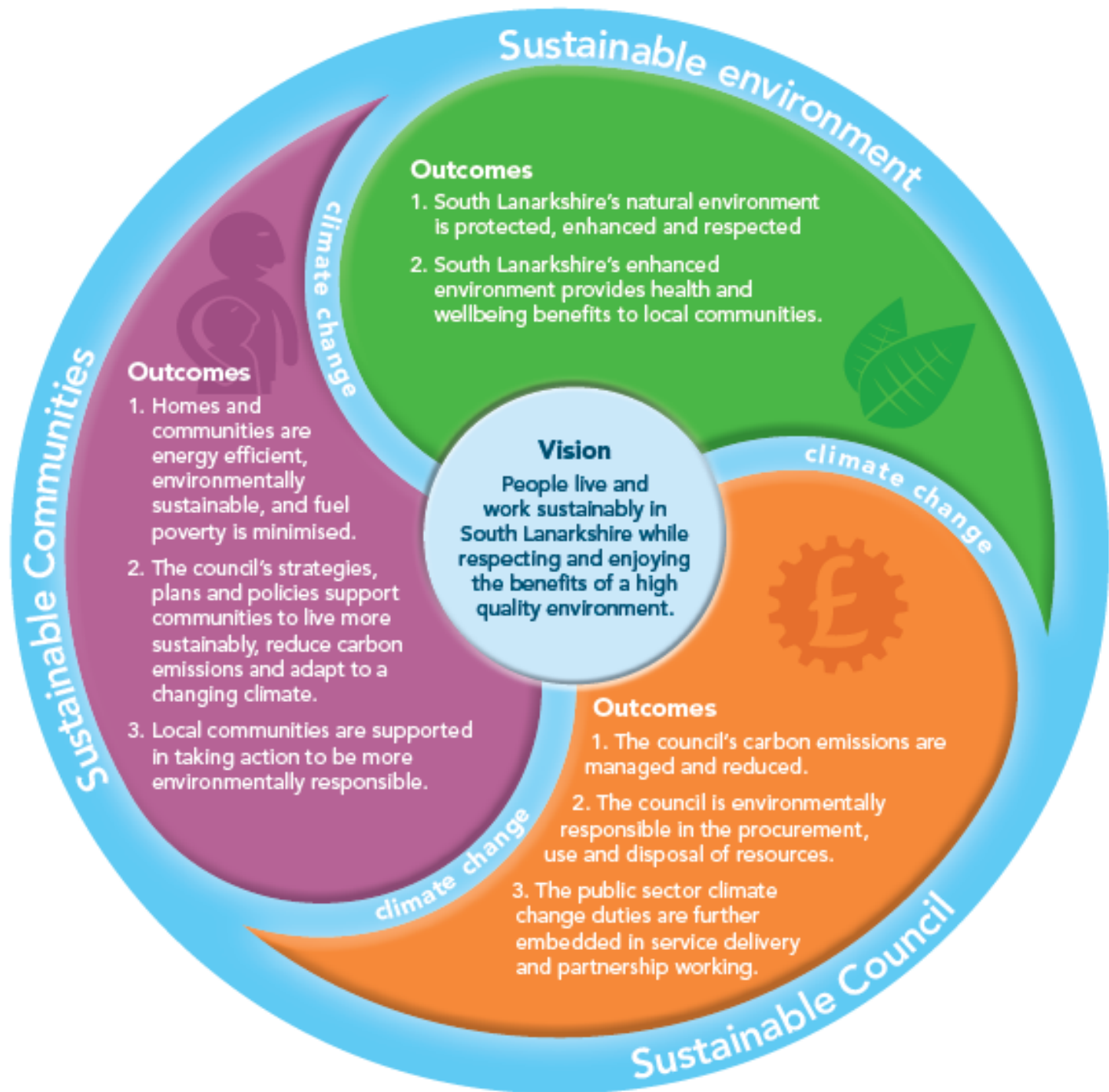
Sustainable
South Lanarkshire



What's your strategy

- Strategy Overview
- Governance and Leadership
- Buy-in and engagement
- Levers and Drivers
- Challenges and Barriers
- What works for SLC and what needs improving





Sustainable Development and Climate Change Framework

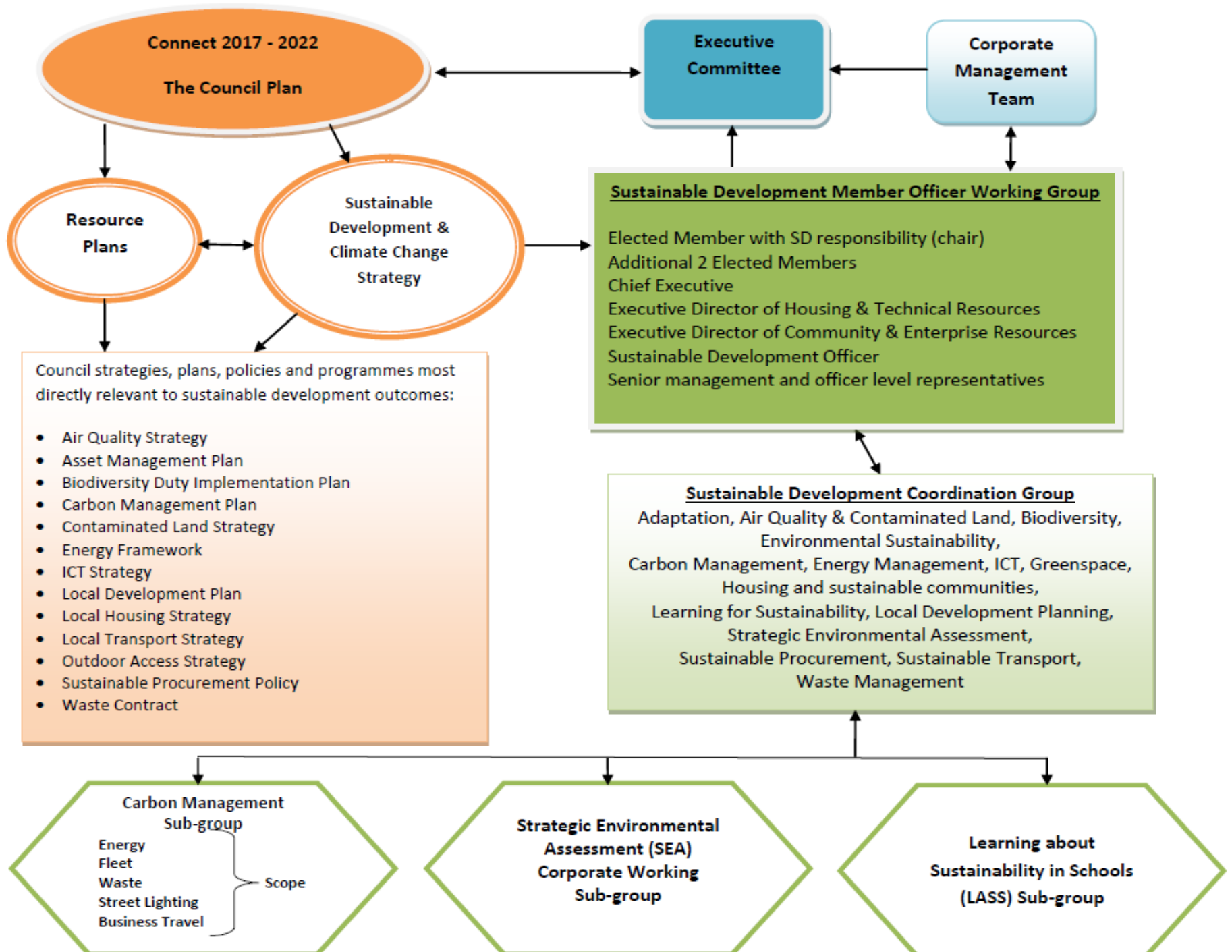
Theme	Outcome	How we intend to achieve outcomes
Sustainable Council	The council's carbon emissions are managed and reduced	Implement our Carbon Management Plan to reduce the council's carbon footprint in line with the Scottish Government's targets
		Continue to implement energy efficiency measures across council facilities including investment in renewable and low carbon energy solutions
		Implement measures within the council's fleet to contribute to the Scottish Government's ambition of the decarbonisation of road transport
		Continue to improve the efficiency of our business travel and promote more sustainable travel options for employees
	The council is environmentally responsible in the procurement, use and disposal of resources	Continue to develop procurement processes to improve environmental outcomes and ensure compliance with the council's sustainable procurement duty
		Create a culture of resource efficiency in the workplace
		Maximise the use of environmentally responsible materials and reduce, reuse and recycle construction waste in new and refurbished council facilities
	The public sector climate change duties are further embedded in service delivery and partnership working	Demonstrate leadership and further develop partnership approaches in sustainable development and climate change action
		Ensure that sustainable development and climate change is used as a guiding principle in council plans, policies and strategies and these incorporate environmental considerations
		Take account of the public sector climate change duties (mitigation, adaptation and acting sustainably) when making decisions about the use of our assets and capital investment in our estate
		Continue to raise awareness of sustainable development and the business impacts of climate change with our employees and develop the skills required across the council to influence and adapt to change

Theme	Outcome	How we intend to achieve outcomes
Sustainable Environment	South Lanarkshire's natural environment is protected, enhanced and respected	Review and assess air quality throughout South Lanarkshire in line with our Air Quality Strategy
		Ensure our planning and land use policies protect and enhance the natural environment and ecosystem services
		Continue to measure progress and report on the state of South Lanarkshire's environment
		Meet our statutory biodiversity duty by implementing our Biodiversity Duty Implementation Plan which will enhance and protect biodiversity through managing our own estate
		Contribute to South Lanarkshire Biodiversity Partnership's action plan ensuring ecosystems are used sustainably and strengthened
		Use our natural environment to help mitigate and adapt to the impacts of climate change
	South Lanarkshire's enhanced environment provides health and wellbeing benefits to local communities	Continue to develop the Greenspace Strategic Partnership to enable people to learn, play and be physically active outdoors in South Lanarkshire
		Work in partnership to develop and implement South Lanarkshire's Outdoor Access Strategy
		Continue to educate our young people about the local environment in which they live and encourage them to reduce the negative impacts they have upon it
		Provide environmental volunteering opportunities and support community groups to manage local environmental projects

Theme	Outcome	How we intend to achieve outcomes
Sustainable Communities	Homes and communities are energy efficient, environmentally sustainable, and fuel poverty is minimised	Explore options for innovative and affordable low carbon energy and heating solutions in local areas that will contribute towards national climate change ambitions
		Continue to invest in energy efficiency measures in council homes including improvements to the fabric of the building, installation of affordable low carbon heating and the use of renewable technologies
		Work in partnership to provide advice and support to local communities to help increase energy efficiency at home and minimise fuel poverty
		Increase focus on sustainability for new developments through innovative design and delivery, using natural resources and environmentally-responsible building materials, and incorporating low carbon energy solutions

		Implementation Plan which will enhance and protect biodiversity through managing our own estate
		Contribute to South Lanarkshire Biodiversity Partnership's action plan ensuring ecosystems are used sustainably and strengthened
		Use our natural environment to help mitigate and adapt to the impacts of climate change
	South Lanarkshire's enhanced environment provides health and wellbeing benefits to local communities	Continue to develop the Greenspace Strategic Partnership to enable people to learn, play and be physically active outdoors in South Lanarkshire
		Work in partnership to develop and implement South Lanarkshire's Outdoor Access Strategy
		Continue to educate our young people about the local environment in which they live and encourage them to reduce the negative impacts they have upon it
		Provide environmental volunteering opportunities and support community groups to manage local environmental projects

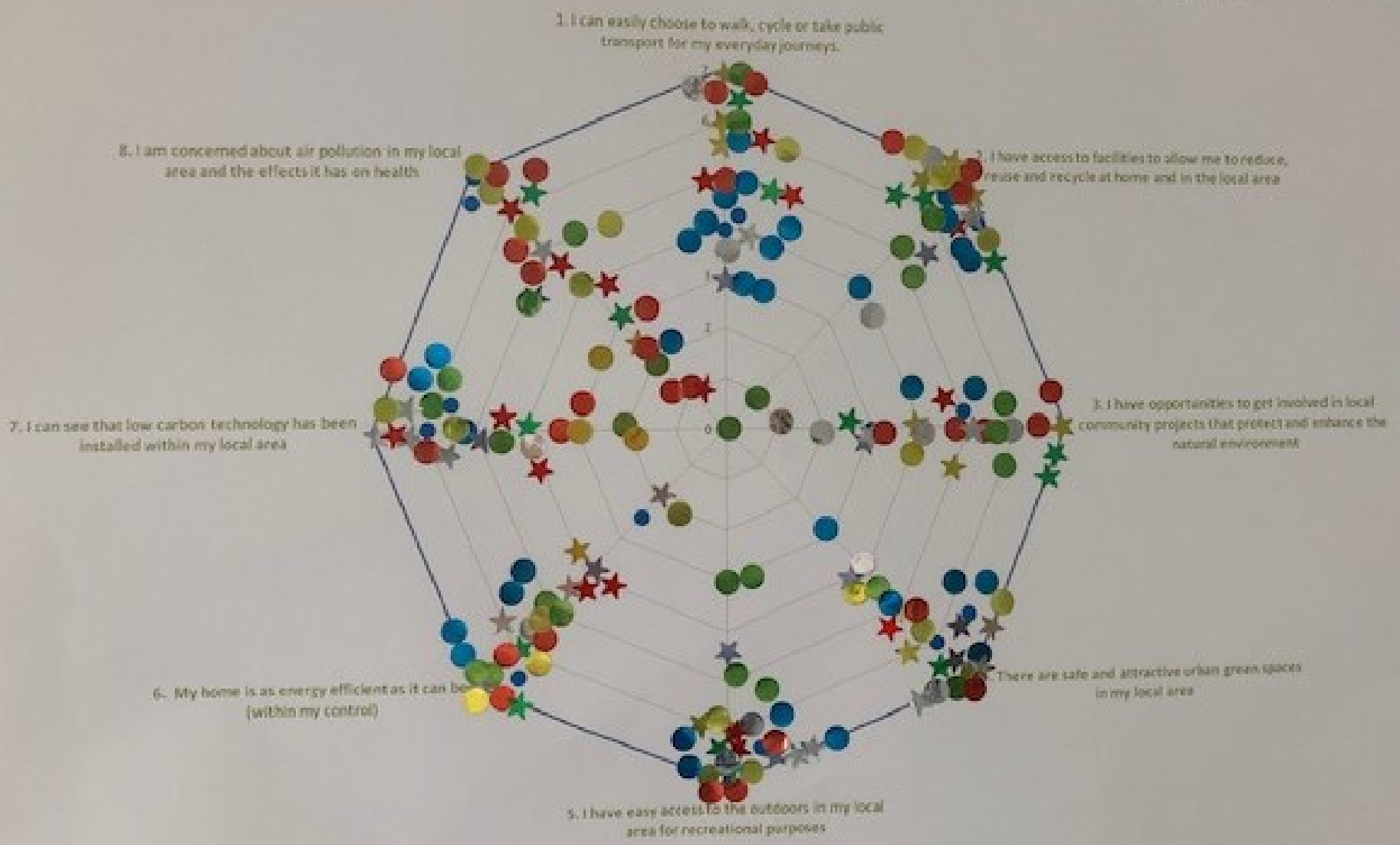
Theme	Outcome	How we intend to achieve outcomes
Sustainable Communities	Homes and communities are energy efficient, environmentally sustainable, and fuel poverty is minimised	Explore options for innovative and affordable low carbon energy and heating solutions in local areas that will contribute towards national climate change ambitions
		Continue to invest in energy efficiency measures in council homes including improvements to the fabric of the building, installation of affordable low carbon heating and the use of renewable technologies
		Work in partnership to provide advice and support to local communities to help increase energy efficiency at home and minimise fuel poverty
		Increase focus on sustainability for new developments through innovative design and delivery, using natural resources and environmentally-responsible building materials, and incorporating low carbon energy solutions
		Incorporate inclusive and sustainable place-making principles into the design and delivery of area-based housing development projects and programmes
	That council's strategies, plans and policies support communities to live more sustainably, reduce carbon emissions and adapt to a changing climate	Continue to divert waste from landfill by providing and encouraging the effective use of household waste management services across South Lanarkshire
		Work in partnership to help build resilience in local communities and mitigate against the potential increase of health and social inequalities from the impacts of climate change
		Work in partnership to ensure that local infrastructure is resilient to the impacts of climate change and seek opportunities for including blue-green infrastructure to mitigate and adapt to the impacts of climate change
		Encourage the uptake of low emission vehicles across South Lanarkshire



Have your say

Please rate each statement on a scale from 1 to 7

- 1 means there is a lot of room for improvement
- 7 means there is very little room for improvement



Levers and Drivers

- Sustainable Development Goals
- Public Sector Climate Change Duties statutory reporting
- Paris Agreement
- Climate Emergency
- Net-zero target



Challenges and Barriers

- Middle Management
- Lack of agency
- Conflicting priorities
- Silo working
- Annual budgeting/Funding/Financing
- Risk Taking



What works well and needs improving

Works Well

- Governance/Leadership
- Framework and environmental statement
- Sustainable South Lanarkshire Branding

Needs Improving

- Collaborative climate change projects with Community Planning Partners
- Climate Change Adaptation at an organisational level
- Community engagement

